

# VIKING VOICE

JANUARY 2005 VOLUME '04-'05, ISSUE 4

SANTA MONICA HIGH SCHOOL 310/395-3204

601 PICO BOULEVARD, SANTA MONICA, CA 90405, *Santa Monica-Malibu Council, 33rd District*

KAREN DICKERSON & CHERI ORGEL, *PTSA Co-Presidents*; ILENE STRAUS, *CEO/Principal*; GRETCHEN GOETZ, LOUISE JAFFE & MARIA RODRIGUEZ, *Co-Editors*

## Here comes Second Semester!

### Our district mourns Dr. Neil Schmidt

Neil Schmidt passed away on Wednesday, December 15th, 2004, after having an allergic reaction brought on by a bee sting. Dr. Schmidt was the Superintendent of SMMUSD from 1992-2001. He worked tirelessly on behalf of all the students and families in our district and was a leader in early childhood education, family involvement and closing the achievement gap.

For more information, please go to:

[www.surfsantamonica.com/Former\\_Supt\\_Schmidt\\_Dies.htm](http://www.surfsantamonica.com/Former_Supt_Schmidt_Dies.htm)

### Message from the Principal

Dear Parents,

At Samohi we have been working hard to ensure that your child is making good academic progress. Besides providing online grade access through our Pinnacle system, our PTSA is committed to strong communication by assisting us with the mailing of each six-week progress report. They also produce this newsletter full of important information for parents.

Each House team of teachers, advisors and administrators has been working to design an intervention plan to provide additional academic support for students in their house. Mentoring, tutoring sessions and developing more personal relationships with students through the house structure are some of our strategies. House Principals are communicating with parents through email and houses have planned activities to bring parents, staff and students together to strengthen their smaller communities within the larger Samohi community.

Our parent groups have been planning panel presentations, workshops, and funding tutoring and library opportunities, as they focus their efforts to reach out to students and parents in our large comprehensive high school.

We are a large school. We are working to coordinate our efforts to know students well, to ensure strong academic progress, and to prepare students well for post secondary schooling. **This year we are working to keep the master schedule of classes stable for our students at the semester**, by providing the same teacher for the entire year of an academic core course. While we plan math intervention to ensure students will complete their math requirements successfully, we want to maintain the relationships and classroom continuity for all of our students. **We have refined our mid-year drop policy which is included in this newsletter.** (see page 3) It is intended to provide continuity for students while allowing advisors and House Principals to work with students to evaluate concerns and options. Deadlines are clearly stated, as is the process for review. **Students will not be allowed to drop courses that are required for graduation, and they may only drop approved courses if there is a class they can enroll in during that class period.**

*continued on page 7*

### Message from PTSA Co-presidents

#### Happy New Year!

We wish the entire Samohi community a Happy New Year and hope everyone had a safe and enjoyable holiday season.

It is hard to believe the Fall semester will soon end and we are fast approaching the beginning of the end of the 2004-2005 school year. **With that in mind, the PTSA nominating committee is working feverishly in its efforts to maintain a strong, parent leadership group for 2005-2006; there are several key positions that will need to be filled, most notably, PTSA co-presidents, Viking Voice newsletter editor and the Beautification co-chair.** We believe parent involvement will always be an essential component in the success of Samohi and our community. PTSA continues to make great strides in terms of establishing strong relationships with the Samohi administrative team, instructional and support staff, improving communications between home and school by producing and funding the mailing of the *Viking Voice* newsletters and coordinating and funding ongoing campus beautification projects.

**Please support our efforts to reach out to all families and continue to encourage parent participation on all levels. It is not too late to make direct donation contributions, join the PTSA, volunteer for upcoming events and help us identify candidates for the very important 2005-2006 PTSA positions.**

Karen Dickerson, 216-6723, [akiwest2000@yahoo.com](mailto:akiwest2000@yahoo.com)

Cheri Orgel, 451-1938, [clorgel@aol.com](mailto:clorgel@aol.com)

*Samohi PTSA Co-presidents*

### Important Dates!!

#### February 8th PTSA Meeting to focus on Houses

*Tuesday, February 8th, 2005 at 7 pm in the student cafeteria*  
Following a brief Principal's Report by Dr. Straus, we will break into meetings with House Principals. Come find out what your House is doing to know each student, improve academic success and how you can get involved. Spanish translation is provided at all PTSA meetings. All are invited!

#### Mark your calendar!

*No School* on Jan. 31st, *Pupil Free Day* and Feb. 21st, *Presidents Day*

*Open House* is the evening of Tuesday, March 1st

*Spring Break:* March 21st through April 1st

#### First Semester Ends Friday, January 28th, 2005!

**Semester Report Cards will be mailed home the week of January 31st.**

#### Second Semester, First Six Week Grading Period ends

**Friday, March 11th.** Progress reports will be mailed home the week of March 14th. (*mailing paid for by PTSA*).

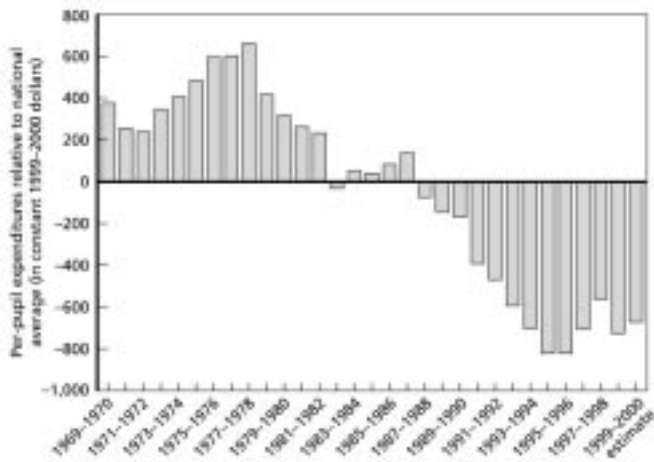
# Budget concerns *State, city, district and school budget updates*

**Did you know?** • *California has among the highest academic standards in the country?* • *Only seven states spend less per student on education than California?* • *California has the second highest ratio of students per teacher in the nation?*

## **RAND Report shows California Schools lag behind other states on almost every objective measurement**

**California's public school system lags behind most of the nation on almost every objective measurement of student achievement, funding, teacher qualifications and school facilities,** according to a new RAND Corporation analysis that is the first comprehensive examination of measurable dimensions of the state's education system. The study issued January 3rd chronicles how the state's K-12 school system has fallen from a national leader 30 years ago to its current ranking near the bottom in nearly every objective category.

California's K-12 Public School Per-Pupil Spending Relative to the National Average, 1969-1970 to 1999-2000



As we go to press, plans are being made for a community presentation by Stephen Carroll, RAND senior economist and lead author of the report. We'll send out emails and a dialer message when details are confirmed. For more information on the study and to read the executive summary or full report, go to [www.rand.org/news/press.05/01.03.html](http://www.rand.org/news/press.05/01.03.html)

## **Local Funding helps SMMUSD**

Beginning with this school year, the City of Santa Monica and our School District agreed to a new contractual arrangement whereby the City pays a base fee of \$6 million annually in exchange for increased community use of School District facilities. The agreement provides for a cost of living increase and also a future "re-basing" tied to increases in City revenues.

**This support combined with voter approval of past parcel taxes has helped shelter our schools somewhat from the impacts of state underfunding.** However, even with this level of local support, Samohi lost 11 teaching positions this year with a resultant increase in class sizes.

## **Governor's budget proposal leads to SMMUSD budget freeze**

**The January 10th presentation of the Governor's budget has sent shock waves through California's education community.**

In a letter to the Board of Education, Superintendent John Deasy writes:

*"This proposal .... would completely negate the 2004-2005 budget agreement between the [Schwarzenegger] Administration and the Education Coalition.....[and] will have substantial and serious consequences on our budget preparation and bottom line, if enacted. Needless to say a normal budget calendar and cycle are now out of the question. An extreme conservative approach to budget preparation will be the order of the day. Unfortunately, but never the less required, I must ask the fiscal office to implement an immediate and stringent freeze on expenditures. This is due singularly to the unknown and potentially dire circumstances facing us by the Governor's budget proposal."*

(excerpted from "From the Superintendent," at [www.smmusd.org/supt/2004-2005/budget0506info.htm](http://www.smmusd.org/supt/2004-2005/budget0506info.htm))

PTA will be following the state and local budget processes carefully and will try to keep you informed.

## **California State PTA's Education Coalition Explains...**

*On January 10 the Education Coalition, which includes the California State PTA, released a statement on the Governor's Proposed 2005-06 State Budget:*

### **Education Coalition Statement on Gov. Schwarzenegger's Proposed State Budget 2005-06**

**The Education Coalition believes it is unconscionable that the Governor's proposed budget breaks the promise he made to California's students and public schools.**

Last year, students and public schools sacrificed \$2 billion in ongoing cuts because the Governor promised that our schools would receive their fair share of any additional state revenues and would be spared cuts in future years. **The Governor's budget proposal breaks his promise to California's six million students and takes even more money from our schools.**

**The Governor's proposals are a smoke screen designed to divert public attention from the real problems facing our public schools.** They do nothing to help public schools and students. Instead, they exacerbate an already inadequate funding problem by adding new requirements without any commitment to adequate and stable funding.

**California schools have suffered more than \$9.8 billion in cuts in the last four years.** This has meant school closures, increases in class size, lay offs of teachers and support staff, and a devastating shortage of librarians, counselors and nurses. Many schools lack basic supplies and instructional materials. California voters passed *Proposition 98* in 1988 to protect schools and students from harmful budget cuts and to establish at least a minimum level of education funding.

**The Governor's plan to cut another \$2.3 billion from our schools goes against the will of California voters, fails our students and breaks the education budget agreement approved by the Governor and the Legislature last year.** Two recent independent reports concluded that California's schools were underfunded, had some of the largest class sizes in the country and inadequate teacher salaries. At the same time, studies credit California for having the highest student standards and accountability assessments of any state in the nation. We can't expect our students to meet those high standards without giving them the resources they need to succeed. Our students and schools deserve better.

*A summary of key provisions of the Governor's budget is available at [www.cbp.org/2005/050110govbudget.pdf](http://www.cbp.org/2005/050110govbudget.pdf)*

*The proposed budget is available at [www.govbud.dof.ca.gov/](http://www.govbud.dof.ca.gov/)*

## Free Tutoring and support is available at Samohi!

- Many teachers provide additional help after school or during lunch. Have your child ask their teacher if extra help is available.
- College student tutors are now on campus Tuesdays and Thursdays after school until 5:00pm in Room T207 and T208 for tutoring and peer advising. Help in Math, English, Biology, and other subjects is provided free of charge.
- Math Tutor, volunteer Warren Orloff, is available every day after school until 4:30pm in Room H100.
- There is always a librarian on hand to help students use the library (open from 7am-5pm Monday through Thursday and from 7am-4:30pm on Fridays.)
- Students in our Alliance program have access to an in school tutorial built into the school day. For more information, please contact your child's advisor.
- Second semester, a math tutorial will be built into the school day in addition to their regular math class to support students who are struggling in algebra and geometry as indicated by their grades.
- A tutorial is being developed to assist students who have not passed the CAHSEE (California High School Exit Exam). This will occur after school and your child will receive these mandatory services through an invitation.

If you have any questions about tutoring, please call Wendy Wax Gellis, Advisor/Administrator, 395-3204 ext 472 or email at gellis@smmusd.org.

## Counseling and support

Counseling is available on campus for students experiencing problems which are interfering with their ability to be successful at school. Speak with your child's House Advisor if you would like your son or daughter to receive such services.

For more information, please contact:

Kathy McTaggart, Alliance Program Director, 395-3204, ext. 322, mctaggart@smmusd.org,

Tiffany Tyler, Student Outreach Specialist, 395-3204, ext. 330

Roberto Morales, Student Outreach Liaison, 395-3204, ext. 331, roberto.morales@smmusd.org

## Samohi's Library is open with help and resources

(Mon-Thurs from 7am-5pm, Friday til 4:30pm)

Remember, there is always a certificated teacher on hand to assist students. Both print and electronic materials relate to the curriculum so students can almost always find what they need.

**New! eBooks/reference in the library!** Our first eBooks in the Samohi Library are reference books from Gale Publishers. From the library webpage, [www.samohi.smmusd.org/library/](http://www.samohi.smmusd.org/library/), scroll down and click on *Galenet*. Enter password: sant86396. Select *Gale Virtual Reference Library*. You will find the complete volumes of: *Dictionary of World Biography*, *Encyclopedia of the Great Depression*, *Encyclopedia of National Economies*, *Encyclopedia of Nations*, and the *Encyclopedia of Science*.

-Ann McKechnie, Library Media Teacher, 395-3204, ext. 437, mckechnie@smmusd.org

-Dana Bartbell, ext 262 bartbell@smmusd.org, Samohi Librarians

## 2nd Semester Progress Reports and Report Card

6th week ends March 11: Progress report mailed home week of March 14th

12th week ends May 6: Progress report mailed home week of May 9th

2nd semester ends June 24: Semester Report Card mailed home week of June 27th

## New policy!

## Dropping/Adding/Transferring Classes

Students desiring to change classes must meet with their academic advisor. For the first three (3) weeks of the semester, students may drop classes that are not graduation requirements, providing there is another class the student may take.

There will not be an increase in Teaching Assistant (TA) service positions, but there are some electives that will be available.

Students must meet and discuss the impact of any schedule change with their advisor.

Students in grades 11 and 12 may reduce the length of their school day if they are meeting all of their graduation credits and requirements; however, students in grade 11 must maintain a minimum of 5 classes and students in grade 12 must maintain a minimum of 4 class periods. Students must be making satisfactory progress toward all graduation requirements. Students in grades 9 and 10 must maintain a 6 period school day. The advisor will evaluate each case on an individual basis.

There will be no "repeat courses" this Spring for several reasons. Past Spring repeat courses for classes not passed in the first semester have not shown successful rates of passing. In addition, students who were not in repeat, often had their entire schedules changed due to closing and opening of new classes. That practice disrupted positive classroom relationships between students and teachers as well as disrupted good academic progress.

This year our priority for students is stability with the content area teacher to ensure strong academic progress. Any class change approved by the advisor will include the same academic teacher. Requests for change of teachers for the same course are not accepted. Students have signed up for one year courses and it is our intent to protect the integrity of students' schedules, so that instruction will continue on a consistent basis to prepare our students well for May testing, California High School Exit Exam, and for strong overall academic progress.

All class changes that are approved will be completed by the third week of the second semester. Requests through the first grading period that are received one week after the first progress reports are mailed home will be considered. These requests must be submitted to the house principal and will be reviewed by an administrative committee. No class changes will be considered or made after the eighth week of classes.

## DROP DATES for Second Semester 2005

Please note that all requests go to advisor/house principal

Feb. 18, 2005 with advisor review

Feb. 25, 2005 with administrative review

## All 10th Graders

## California High School Exit Exam (CAHSEE)

All 10th grade students will be taking the California High School Exit Examination (CAHSEE) on Tuesday, March 15th (English/Language Arts) and Wednesday March 16th (Math). There will be no late start on that Wednesday.

The CAHSEE is a statewide exam that all California public school students must pass in order to graduate from high school as mandated by state law. The purpose of the CAHSEE is to help improve student achievement in high school and ensure that students who graduate from high school can demonstrate competency in the state content standards for reading, writing, and mathematics.

Remind your 10th graders of the significance of being well rested and on time both days so they may do their best on this test.

Remember to mark your calendars! No late start on Wednesday, March 16th due to the CAHSEE Math test.

-Tristan Komlos, Administrator responsible for Testing, 395-3204 ext 336 or tristan.komlos@smmusd.org

### Get involved with Grad Nite 2005!

Please join us at our next general meeting, **Tues., Feb. 1** in the student cafeteria. We will be mailing the volunteer form to all senior parents, so we need people to help! In addition to stuffing envelopes, this is an excellent opportunity to meet the committee members and discover how YOU can participate in this event.

If you are a senior parent, look for the volunteer form to reach your home the first week of February. Volunteer slots are filled on a first come basis, so return the form quickly to reserve your time shift. If you are taking your graduate out to dinner following graduation, we prefer that you DO NOT sign up for the first shift. If you cannot work event night, there are other ways to be involved. Contact **Kim Eyster**, the volunteer coordinator, for more details: eyler6@aol.com, 391-0782.

In late February, volunteer forms will be available to non-senior parents at PTSA, SOL-BAC and AAPSSSG meetings; and also in the activities office and on the web page for downloading.

**Has your student purchased their Grad Nite ticket?** For a complete list of students who have purchased their tickets, go to the Samohi web page: [www.samohi.smmusd.org/Grad\\_Nite](http://www.samohi.smmusd.org/Grad_Nite) For information on layaways or scholarships, please contact **Chris Thornton**, [chthornton@earthlink.net](mailto:chthornton@earthlink.net), 450-2978.

**Donations of money, prizes, and construction materials are always needed.** For details, contact **Val Glick**, [fiveluck@aol.com](mailto:fiveluck@aol.com), 392-5970.

**The Grad Nite Food Committee, in charge of feeding all those hungry grads, needs your help.** We are looking for donations of food, beverages, paper goods and anything else to keep those teens hopping and bopping into the wee hours and beyond. There are over 650 mouths to feed (plus, volunteers). Join us in this effort. I promise, it'll be fun. If you or someone you know is in or has contact with someone in the food services industry please, contact:

**-Janine Brownstone**, *Food Chair, Grad Nite Committee*, 393-9174, [JanAndBobo@Adelphia.net](mailto:JanAndBobo@Adelphia.net)

### Samohi's Library Requests and Events

**We need volunteers to shelve books** and make sure they are in order. With an average of 800 students a day in the library, we need lots of help! **We also need Books on Tape:** Listening to a book while reading it is very helpful for some of our struggling readers. Teachers are also looking for books to listen to as they commute.

**Poetry Week:** Thanks to a grant from the Santa Monica-Malibu Education Foundation, the school district librarians will sponsor a Poetry Week in April. The weeklong event will be filled with speakers, contests, games, poetry books and a lot more. Please let us know if you would like to help.

**The Kite Runner:** The new *City-wide Reads* book for 2005 is *The Kite Runner* by Khaled Hosseini. Everyone in Santa Monica is encouraged to read this exciting, heart-rending memoir of a young man growing up in Afghanistan in the 1970's. A New York Times bestseller, *The Kite Runner* won the Alex Award for best book for both adults and teens.

On April 14, after school at the Samohi Library, students will be encouraged to participate in a Kite Runner event sponsored by the school library in conjunction with the Santa Monica Public Library. Pertinent scenes from Afghan movies will be shown, Afghan food will be served, students will read aloud, and Library Media Teacher Ann McKechnie will talk about her experiences living in Kabul from 1976-1978.

**Great Student Library Technicians:** The Samohi Library would like to acknowledge the exemplary performance of our student library technicians: *Dennis Kuntorovskiy*, *Nicki Movassaghi*, *Alberto Garcia*, *Nithyana Javaraiah*, and *Dieter Alvarado*. These fantastic students keep the books in order, assist students, troubleshoot computers, check books in and out, and help keep the library running smoothly.

**-Ann McKechnie**, 395-3204, ext. 437, [mckechnie@smmusd.org](mailto:mckechnie@smmusd.org)

**-Dana Bartbell**, ext 262 [bartbell@smmusd.org](mailto:bartbell@smmusd.org), *Samohi Librarians*

*The Viking Voice, January '05*

### Summer School Session at Samohi

Samohi offers a six-week summer school that typically starts the week after the regular school-year ends. The 2005 Summer School will begin Tuesday, July 5 and end Friday, August 12. Summer school provides students an opportunity to repeat classes, correct deficiencies and "catch up" on credits. There will be no "get ahead" courses offered in summer school at this point. Should the budget situation and plans change we will notify students and parents. Registration begins after Spring break in April. Space is limited.

**An application for summer school is required.** Information will be posted on the school web site ([www.samohi.smmusd.org](http://www.samohi.smmusd.org)) when it is available and will be available through the advisors. **Students need administrative approval prior to taking classes at other school sites if you want credit on your transcript. You must use the site form which lists acceptable institutions.** The website will contain all relevant information and forms. Questions regarding summer school may be directed to **Mrs. Esseln**, 395-3204, ext 139. More information will follow.

### Teenage Drinking and Substance Abuse

The January 11th PTSA meeting focused on teen drinking and substance abuse, featuring an amazing panel of local experts. Each panelist stressed the importance of open communication in families and welcomed further communication with Samohi students and families. The panelists included:

**Kathy McTaggart**, *Samohi and SMMUSD Community Liaison, Drugs and Alcohol*, 395-3204, ext 322. Provides intervention for Samohi and district students.

**Susie Spain**, *Angels at Risk*, 471-8969 or 323/ 841-9631

A counseling program for teens and families coping with substance abuse at Samohi, meets every Tuesday night at 6 pm.

**Suzie Kim**, *SMPD Community Relations, Crime Prevention Coordinator*, 434-2627

**Ze'ev Korn** and **Marisa Graiwer**, *Jewish Family Services*, 393-0732

A family counseling service on campus seeing students for any issue. Also a general "mental health resource" welcoming any general questions from Samohi students and families.

**Sgt. Trisler**, *SMPD, Traffic Education and Enforcement*, 458-8950

Education for teens about driving under the influence of alcohol or drugs. **Officer David Rynski**, *SMPD, School Resource Officer*

**John Lieberman**, *Visions*, 592-7623 or 818/ 889-3489 A local in- and out-patient facility for teens and families.

**Anthony Smith**, *New Start*, 586-0058, ext 201, a chemical dependency counseling service for teens and families. A huge thank you to each of these panelists who are making a difference in our community and are available to our students and families. Please note that many of the services above are free of charge.

### On days that it is supposed to rain...

**please make sure your child is dressed, with an umbrella and/or rain jacket.** I have so many wet and cold students in my office wanting to go home. To get to and from classes, students have to walk in the rain. Many said that they wished they had remembered sweatshirts, and I had to remind them that a sweatshirt won't keep them dry!

**Lora Morn**, *Samohi Nurse*, 395-3204, ext 374, [morn@smmusd.org](mailto:morn@smmusd.org)

### End-of-Semester Library and Textbook Reminders

As the end of the first semester approaches, please remind your students to return any overdue library books, and to resolve any textbook obligations. If your student still has literature texts from earlier in the semester or is changing classes at the semester, those textbooks need to be returned to the Textbook Room before the second semester starts. **Failure to return library and textbooks may also result in delays in picking up second semester schedules.**

*Samohi 395-3204*

## SMC classes at Samohi this semester

As part of our "dual enrollment" program with SMC, the following SMC classes are being offered this semester on our campus after school.

**Dance 31: Ballet 1, Mon & Wed 3:30-5**

**Art 10A: Design 1, Mon & Wed 3:30-5:55**

**New! Business I: Introduction to Business, Mon & Wed 3:30-4:50**

There are many advantages for students:

- Make yourself more competitive for college. You can prove to the colleges that you are capable of college-level work.
- Some classes offered are transferable to the UC and CSU system.
- Classes are free. Students purchase only textbooks and course materials.
- Earn high school and college credit. Get a head start on your college education.
- Exposure to college-level curriculum in a friendly environment.

**To sign up for this program, students will need to complete a Santa Monica College application and dual enrollment consent form.** For additional questions or information you can contact your child's advisor or **Mrs. Audet**, *Dual Enrollment Site Coordinator*; in H106, 395-3204, ext. 187, [audet@smmusd.org](mailto:audet@smmusd.org)

## Is your student interested in taking an AP Art Class?

**AP Art is a rigorous federal program engineered to give high school students the opportunity to gain college credit. The class requires a great deal of talent, motivation and dedication.**

Students should take at least four art classes, either at Samohi or elsewhere, before they apply for entry to AP Art. Please consult the Collegeboard Website for information, including samples of art.

**Screening for AP Art takes place during the last week of February.** Admitted students must attend a mandatory New AP Art student meeting in the Spring. During the summer, the class requires 12 new art works. Students must comply with the following procedures to be considered for AP Art.

**To apply, submit the following to A103 (Ms. Bouse's room) during the last week of February:** 10 pieces that well illustrate your ability. One still life, one self-portrait and one life drawing must be included. Three different media must be used (i.e. pastel, clay, photo, paint, etc.) On each work, please write your complete name, phone and grade for the next school year. Write a one-page essay explaining your background in art and why you wish to enroll in AP Art. Focus on your abilities, particularly self-motivation and dedication. Place all work in a portfolio or large envelope.

**For more information, please contact Ms. Bouse**, 395-3204, ext 443, [bouse@smmusd.org](mailto:bouse@smmusd.org)

## College Entrance Test Dates & Registration Deadlines

**Online registration (payment by credit card) for:**

**SAT I & II tests:** [www.collegeboard.com](http://www.collegeboard.com) **ACT test:** [www.act.org](http://www.act.org)  
The Future Center has practice materials and paper applications and can help you determine which tests to take.

Upcoming Tests	Test Date	Registration date ends	Late Registration with late fee by
ACT	Feb. 2, 2005	<del>Jan. 7, 2005</del>	Jan. 21, 2005
New SAT I only	Mar. 12, 2005	Feb 7, 2005	Feb. 16, 2005
ACT	Apr. 9, 2005	Mar. 4, 2005	Mar. 18, 2005
New SAT I & II	May 7, 2005	Mar. 25, 2005	Apr. 6, 2005
New SAT I & II	June 4, 2005	April 29, 2005	May 11, 2005

## Important Information for Seniors

**FAFSA application deadline:** January 1 - March 2, 2005

**Financial Aid Workshops for FAFSA:** Jan. 10 & Feb. 22, 2005

**Samohi Scholarship applications due:** March 1, 2005

**Senior Scholarship and Honors Evening:** June 7, 2005

### Final FAFSA Workshop

February 22nd, 7 pm, Samohi Library

**Are you ready for your biggest date yet? March 2nd – that is the date your student's FAFSA form is due and it is getting closer every second. Why so big? Because there is big money involved – maybe as much as \$9700 a year for college. What are you waiting for? Submit the FAFSA form. For information, stop by the Future Center today!**

Here are some FAFSA facts:

1. **The Free Application for Federal Student Aid is the most important document you can file to obtain financial aid.** Even if you feel you will not qualify, it is recommended that you file. Many schools will not consider you for any kind of aid, loans, or work study unless financial data is available from the FAFSA.
2. Free means you do not have to pay anyone to complete the FAFSA. If you file online, online help is available. We will have a workshop to answer questions you may have. Phone help is also available from the Federal Student Information Center toll free number - 800-433-3243.
3. The priority filing date is January 1 through March 2.
4. Be sure you go to the official website at [www.fafsa.ed.gov](http://www.fafsa.ed.gov)

### Mid-Year Reports

**Mid-Year Reports request your seventh semester grades – your grades for the first semester of senior year.** Many schools will request the Mid-Year Report by January 15. Our semester is not finished at that time. Therefore, do not panic. We will send the reports as soon as the grades for the first semester have been finalized, provided you follow the instructions outlined below.

1. Submit your Mid-Year Report forms to the Future Center. If you used the Common Application, complete only one form.
2. Provide a Business Size Envelope, with two (2) first class postage stamps, addressed to each school requiring a Mid-Year Report.
4. We need an official transcript for each Mid-Year Report. Pay for and order your transcripts, at \$2 per transcript, from Estela Flores in the Future Center.

### Scholarship Booklet

**You will not be considered for any local scholarships unless you complete the application at the end of the Scholarship Booklet and turn in seven (7) copies with a highlighted list of the scholarships for which you meet the qualifications.** The deadline is March 1, 2005. Late applications will not be accepted. If the scholarship has an essay prompt, the essay must be turned in with the application.

### Scholarships and Awards

We will be asking you to report all awards and scholarship you obtain. These will be announced at the *Senior Honors Ceremony* at the end of the year. Please begin to keep a record of your awards.

### If you plan to attend Santa Monica College (SMC)

**The SMC Placement Test will be given on January 31, a pupil free day between semesters.** If you wish to take advantage of the opportunity to take this test early, please come to the Future Center to sign up.

### CAL Grants

Your GPA will be submitted electronically by the Future Center to determine if you qualify for a Cal Grant. **We must have your social security number. You must file a FAFSA.**

Seniors! Please report your  
college and university acceptances to the Future Center!  
We want to share in your happiness of being accepted.

## Nominations needed for Outstanding Service to our community

The Samohi PTSA is once again asking for nominations for Honorary Service Awards. These awards are given to an individual or organization in special recognition of outstanding service to children and youth in the Santa Monica High School community.

Awards can be given to faculty, staff, and any other individuals who have positively impacted the quality of life at Samohi.

Please, let us know who has gone above and beyond by emailing Janine Brownstone at [JanAndBobo@adelphia.net](mailto:JanAndBobo@adelphia.net). Or you can drop a note in the PTSA mailbox in the main office at Samohi. Please, include your name and a brief description of what this individual or group has contributed to our school. The deadline is March 1, 2005.

Thanks for your help!

-Janine Brownstone, [JanAndBobo@adelphia.net](mailto:JanAndBobo@adelphia.net), 393-9174 (email preferred)

## Congratulations Samohi!

Do you know a Samohi student, teacher, parent or group who has received special outside recognition? The Viking Voice would like to acknowledge outstanding accomplishments in our community. Please send us a one line description if you know about someone in the Samohi community with good news to share!!

Thanks to those who submitted the news below.

• **Samohi Volleyball Coach, Liane Sato was named Ocean League Coach of the Year**

• **Samohi English Teacher Merdith Louria is back from a three week exchange program in Russia.** Meredith was one of 36 winners of the United States-Eurasia Awards for Excellence in Teaching.

• **Samohi teacher and coach, Tania Fischer is a National Champion.** In December in Portland, Oregon, Tania Fischer led her team, See Jane Run, to the USA Track and Field Club Championships in Cross-country.

• Members of the **Santa Monica High School orchestras** have taken top state and national honors. 45 members of the Samohi orchestras participated in the California Orchestra Directors Association Honor String Orchestra and Honor Symphony in Visalia in December 2004.

• Congratulations to **Allen Goolsby** for being selected for membership in the National Society of High School Scholars.

• Student, **Justin Dean's** film review was a winner at the AFI Film Fest, a city-wide celebration of film at the Skirball Cultural Center.

• The following Samohi teachers have successfully completed the rigorous *National Board certification* process in 2003-2004: **Amy Bisson, Adrienne Karyadi, LaSonya Roberts, and Rob Thais.** National Board Certification is the highest credential in the teaching profession.

*And here on campus...*

• **Andre Konoplev**, Samohi Freshman Seminar student wrote the winning essay in the contest "Smoking Stinks" in celebration of the American Cancer Society's annual "Smokeout". The other winning essays were written by **Dean Schnieder** and **Jameon Fearon**. Essays are online at [www.samohi.smmusd.org/library/](http://www.samohi.smmusd.org/library/)

• The **MEChA toy drive** was a huge success, with 168 gift wrapped toys given to 168 children from Juan Cabrillo, Franklin, Grant, McKinley, Edison, Will Rogers, and Roosevelt elementary schools!!

Please submit your good news to:

**Louise Jaffe**, *Viking Voice* co-editor; 450-2487, [LCJaffe@aol.com](mailto:LCJaffe@aol.com)

**Maria Rodriguez**, *Viking Voice* co-editor; [Elena51@aol.com](mailto:Elena51@aol.com)

## Support Samohi at Albertsons

If you are using an Albertsons/Savon Preferred Savings card, please be sure to visit the Albertsons website and enter your choice of recipient for donation money that will automatically be generated when you shop. Go to [www.Albertsons.com](http://www.Albertsons.com). Through the home page, find the link to *Albertsons Community Partners*. It just takes a few minutes.

*The Viking Voice, January '05*

## Samohi Athletic Gear for sale at home games

Samohi athletic gear is here and going fast. The sweatshirts, hats, and visors are being sold at most home sporting events and will support all our teams. For information and availability, please contact: **Douglas Kim**, *Samohi Athletic Director*; 395-3204, ext 495, [dkim@smmusd.org](mailto:dkim@smmusd.org) or **Jeannie McGrew**, 925-2637, [cajb1234@aol.com](mailto:cajb1234@aol.com)

**Beautification thanks** to parents and PTSA volunteers **Randi Hutchinson** and **Judi Bloom** who have spent countless hours organizing Beautification Days for student and parent volunteers. View their work near the Art Bldg. online at [www.samohi.smmusd.org/art/index.htm](http://www.samohi.smmusd.org/art/index.htm)

## Samohi Marching Band CD/DVD/Video Game Donation Drive

You donate CDs, DVDs and Video Games from your collection and that of your family and friends and we will sell them on eBay and Amazon. Proceeds fund the ongoing operations of the Samohi Marching Band. Bring your CDs, DVDs and Video Games to the Band Room. As long as the CD or DVD is an original recording from the manufacturer and plays perfectly, we can sell it. Every disc and game helps!

**For more information, contact Amy Van Pelt**, email [ABVP@aol.com](mailto:ABVP@aol.com)

## Samohi Leadership Basketball Game

**On February 26, 2005 at 7 pm, we will be having our annual basketball game called Samohi Slam, which is our fundraiser for the senior prom and graduation.** This year, it will be a Samohi versus Lincoln and John Adams faculty basketball game.

Tickets are \$5 in advance and \$10 at the door.

-**Elaine Daneshrad** and *Samohi Leadership*

## The Music Man plays in Barnum Hall March 3-12

**The Music Man** will be presented on an epic scale, with a production ensemble of more than 200, including cast, full orchestra, chorale, and marching band. "It's a unique opportunity to bring together the highly acclaimed band, orchestra, choral, and theatre programs," said Dr. Frank Ford, the show's director. *The Music Man* previews March 3 at 7pm, opens Friday, March 4 at 8pm; and plays Saturday, March 5 and 12 at 2pm and 8pm, for a total of 6 performances only! Tickets are \$20. Purchase tickets at the Humanities Center box office, by phone at 458-5939, or at [www.smclo.org](http://www.smclo.org).

## Direct Donation Drive continues

**We are continuing our Direct Donation drive throughout the school year.** Currently, we are slightly behind in contributions necessary to fully fund this year's plans.

**Special thanks to the following additional families** who have contributed to Samohi as of 1/7/05:

Abbott	Frankel Scheer	Love Corn	Sharf
Altman	Giolito	Lunsky	Soohee
Altman Polon	Given Dennis	Malina Boehm	Stein Pratt
Anderson	Goetz	Miyade-Weaver	Suzuki
Banks	Gordon	Mollicone	Tamor
Beery	Graves	Mulvaney	Thomas
Beitcher	Himes Grawe	Nesbit	Verzemniaks
Blower Friemer	Itano	Newsom	Viault
Bolan	Jacobs	Nobles Kuyanov	Ward Hauty
Cahn	Johnson Wright	Ouzounian	Weber
Connor Rankin	Kannof	Gogonian	Weinberg
Couturier	Kaiserman	Pomatti	Wexler
Daly Southam	Lew	Reyes	Whalen
Davanzo	Lindes	Robins	McQueeney
Dickinson	Long	Salvatori	Williams
Felton	Loopesko	Schaeffer	Young
Fletcher	Stricklin	Sepe-Wiesenfeld	Yuan

**Please continue to give to the Direct Donation Drive, it's not too late!** All donations, regardless of size, are important and will make a difference. **Make checks of any amount payable to Samohi PTSA** and mail to 601 Pico Blvd, Santa Monica, CA 90405.

*Samohi 395-3204*

## Does your teen know the law?

The following message comes from

SMPD Community Relations, Crime Prevention Coordinator, Suzie Kim

The Third Street Promenade is a popular gathering place for tourists and residents of all ages. Recently the Santa Monica Police Department has noticed a significant increase in negative juvenile activity in and around the 3rd Street Promenade, particularly at 3rd and Arizona. When your children are going out in the evening ask them what they are doing, where will they be going (if they say a movie; what time does it start/end, and what was it about?) Who will they be with? What is the method of transportation?

As parents, the following Penal and Municipal Codes are very important for you to know and to share with your teens.

### Santa Monica Municipal Codes:

**Curfew 4.08.370(b)** Under 18 years of age curfew hours are 10pm – 6am Sunday through Thursday and 11pm – 6am Friday and Saturday

**Promenade 3.12.590 Regulation of roller skates, skateboards and similar devices** with wheels on public streets and other public areas and bicycles on the Third Street Promenade roadway.

**3.12.350(a)** During the hours between 6am and 1am, no person shall sit or lie down upon a public sidewalk in the Bayside District or upon the Third Street Promenade roadway.

### Health And Safety Codes

11357b Possession of less than 28.5 grams of marijuana

11532a Loitering as a lookout or selling narcotics, etc

### Penal Codes

71 P.C. Threatening a public officer or school official

182.5 P.C. Participating in a criminal street gang

303a P.C. Loitering to beg or solicit alcoholic beverages

308b P.C. Possession of tobacco and related paraphernalia

490.1 P.C. Petty theft less than \$50.00

374.4(a)P.C. Littering

### Vehicle Code

**21212.(a) Helmet requirements:** A person under 18 years of age shall not operate a bicycle, a non-motorized scooter, or a skateboard nor shall they wear in-line or roller skates, without a protective helmet.

### Business and Professions Code

25658 B&P Minor Consuming alcohol

25658.5 B&P Minor attempting to purchase alcohol

25661 B&P Possession of a false ID by a minor

25662 B&P Possession of alcohol

For additional information, please check the Santa Monica Police Department Website at <http://www.santamonicapd.org>

**SM Police Department non-emergency number 310-458-8491  
Emergency 9-1-1**

- Suzie Kim, 333 Olympic Drive, Santa Monica, 90401, 434-2627

## Local Election Results are in!

There are several new faces and leaders on our elected boards:

**City Council** - Bobby Shriver now joins Ken Genser, Richard Bloom, Bob Holbrook, Kevin McKeown, Herb Katz, and Pam O'Connor on the dais. Pam O'Connor is our new Mayor and Herb Katz is Mayor Pro Tempore.

**College Board** – Susan Aminoff and Rob Rader join Margaret Quinones, Herb Roney, Dorothy Ehrhart-Morrison, Carole Currey, and Nancy Greenstein as the SMC Board of Trustees. Carole Currey has been elected Chair, with Nancy Greenstein, Vice Chair.

**School District** – Kathy Wisnicki joins Jose Escarce, Maria Leon-Vazquez, Oscar de la Torre, Shane McCloud, Julia Brownley, and Emily Bloomfield on the Board of Education. Emily Bloomfield will serve as President; Julia Brownley as Vice President.

The Viking Voice, January '05

## Events around town for teens

**Rock the Pier!** Come hear high school bands play on the Pier on Friday evening, February 18th from 6-10pm. Bands interested in playing should submit a demo to Room L110 at Samohi by January 28th. This event is sponsored by the Library's Teen Advisory Council with assistance from the Santa Monica Pier Corporation.

**Anime Drawing Workshop:** Develop your own comic book characters in the style of Japanese manga/anime with the help of artist Marcie Forest.

Saturday, February 19, 2005. 10:30am to Noon.

Montana Avenue Branch Library, 1704 Montana Avenue.

**Comix. @ \$#: A free three-part reading and discussion series for teens exploring the wide variety of graphic novels, from traditional comics to Japanese manga.** Each session will focus on a theme and include discussion of the art as well as the text. Meetings will be held on Saturday afternoons March 5th and 19th, and April 5th at 3 pm at the Montana Avenue Branch Library at 1704 Montana Ave. Registration for the series is required, and copies of the books will be provided upon signup. **Mail to: Comix. @ \$#**  
Please call 310-458-8976 to find out more and register.

-Catherine Ronan, Young Adult Librarian, Santa Monica Public Library, 310/ 458-8976



Save the Date!

## Celebration For The Arts 2005 at the Santa Monica Pier, April 8-10

FOR THE ARTS

A Fantastic Community Event, featuring:

- An opening night concert on the Pier, April 8th
- A weekend Arts Festival with amazing student performances & artwork, April 9th-10th
- Talented Art Vendors & Local Community Arts Groups
- Delicious Food & Fun Arts & Crafts Activities

**Come Celebrate Music, Visual Arts, Dance & Drama!**

For more information, please call the Education Foundation at (310) 396-4557

## New Lifelong Learning Community website

For easy access to the websites of major Santa Monica institutions – the School District, City, Library, College – go to the new Lifelong Learning Community website at [www.smlc.org/](http://www.smlc.org/) and click on LLC Links!

**Do you have ideas how to make Santa Monica a better place to ride bicycles?** Please bring your great ideas and join

*Motion by the Ocean Bicycle Workshop*

Saturday, Feb. 5th, 10am to noon, Ken Edwards Center, 1427 4th St. RSVP by January 31, 2005 to [310/458-2204](mailto:310/458-2204) or [Transportation.Management@smgov.net](mailto:Transportation.Management@smgov.net)

*Message from the Principal, continued from page 1*

While funding and staffing has been reduced, the Samohi staff continues to focus strong efforts to support students in their daily school lives. You should find staff responsive to email and to telephone calls so that we can work together to support your child when problems and challenges do occur. We do have additional counseling services to support students with more challenging situations, which you may access by talking to your child's advisor. **While we are large and comprehensive, we are striving to also be a more personal and responsive educational setting. Please continue to work with us to ensure that your child's high school experience is strong and successful.**

Sincerely,

Ilene Straus, Ed.D., Chief Educational Officer/Principal

Samohi 395-3204

## ¡Ya Viene el 2do Semestre!

### Nuestro distrito sufre la pérdida del Dr. Neil Schmidt

Neil Schmidt falleció el miércoles, 15 de diciembre, 2004, como resultado de una reacción alérgica después de ser picado por una abeja. El Dr. Schmidt fue superintendente de nuestro distrito, SMMUSD 1992-2001. Él fue un campeón por los derechos de los estudiantes y familias de nuestro distrito y fue un líder en la educación infantil, en la participación de las familias y en eliminar la brecha que existe en los logros de los estudiantes.

Para más información, visite [www.surfsantamonica.com/Former\\_Supt\\_Schmidt\\_Dies.htm](http://www.surfsantamonica.com/Former_Supt_Schmidt_Dies.htm)

### Mensaje de la Directora

Estimados Padres,

**En la escuela Samohi hemos estado trabajando para asegurarnos que todos los alumnos estén haciendo buen progreso académico.**

Cada grupo de maestros, consejeros y administradores han estado trabajando para diseñar un plan de intervención para proveerle apoyo académico adicional para los estudiantes en su Casas. Programas de mentores, asistencia de estudios y desarrollar relaciones más personales con los estudiantes mediante la estructura de las Casas son algunas de nuestras estrategias. Los Directores de las Casas se están comunicando con los padres por medio del correo electrónico y actividades planeadas para unir a los padres, al personal y los estudiantes estableciendo comunidades pequeñas en la comunidad escolar.

Nuestros diferentes grupos de padres han estado planeando presentaciones y talleres, enfocando sus esfuerzos en contactar a los estudiantes y padres en nuestra grande escuela preparatoria.

**Este año queremos mantener el horario de los estudiantes estable durante el semestre, teniendo al mismo maestro por todo el año académico en las clases principales.** Mientras planeamos intervenciones en matemáticas para asegurarnos que los estudiantes terminen los requisitos, queremos también que mantengan relaciones y continuación de clases para todos los estudiantes. Hemos mejorado las pólizas para dejar las clases a mediados del año y la hemos incluido en este boletín. (vea la página 10) Está intencionada para darle a los estudiantes estabilidad y al mismo tiempo permitirle a los consejeros y los directores de las casas de trabajar con los estudiantes para evaluar las preocupaciones y opciones. Las fechas de vencimiento y el proceso están explícito. No se les permitirá a los estudiantes a dejar las clase que son requeridas para graduarse, y solamente pueden dejar una clase aprobada si hay otra clase donde se pueden inscribir en ese periodo.

**Aunque los fondos y el personal han sido reducidos, el personal de la escuela Samohi, continúa enfocando su esfuerzo en el apoyo a los estudiantes en su vida escolar cotidiana.** Por favor continúe trabajando con nosotros para asegurarnos que la experiencia de su niño en la preparatoria sea una de éxito.

Atentamente,



Ilene Straus, Ed.D., Chief Educational Officer/Principal

### ¡Nuevo de la organización de Lifelong Learning Community!

Para encontrar los sitios en la Red Mundial de instituciones en Santa Mónica – el distrito escolar, la Ciudad de SM, Biblioteca, Universidad- visite el sitio nuevo de Lifelong Learning Community al <http://smllc.org/> and click on LLC Links

### Mensaje de las presidentas de la PTSA

#### ¡Feliz Año Nuevo!

Le deseamos a toda la comunidad de la escuela Samohi un Feliz Año Nuevo.

**El comité de la PTSA que elige a la mesa directiva está trabajando duramente para mantener un grupo fuerte de padres líderes para el 2005-2006;** hay varias posiciones claves que no están llenas, unas muy importantes son las posiciones de las presidentas, editor de este boletín Viking Voice, y la directora del embellecimiento de la escuela. La PTSA continua haciendo progreso en establecer relaciones con el equipo administrativo de Samohi, el personal de apoyo e instrucción, mejorando la comunicación entre la casa y la escuela y embelleciendo el campo escolar.

**Por favor apóyenos en alcanzar a todas las familias y continuar la participación de las familias en todos los niveles.** No es muy tarde de hacer una contribución a la donación directa, afíliase a la PTSA, hágase voluntario en los próximos eventos y ayúdenos a identificar candidatos para las posiciones importantes de la PTSA 2005-2006.

Karen Dickerson, 216-6723, akiwwest2000@yahoo.com

Cheri Orgel, 451-1938, clorgel@aol.com

Presidentas de la PTSA de Samohi

### ¡Fechas Importantes!

**La reunión de la PTSA del 8 de febrero se enfocará en las Casas** El martes, 8 de febrero, 2005 a las 7 pm en la cafetería de los estudiantes

Siguiendo un corte reporte de la Directora Dr. Straus, nos dividiremos en reuniones con los directores de las Casas. Vengan a oír lo que las Casa están haciendo para conocer mejor a su estudiante, mejorar el éxito académico y cómo usted se puede involucrar. Siempre se provee traducción al español en todas las reuniones de la PTSA. Todos están invitados.

### ¡Marquen su calendario!

**No hay clases** Jan. 31st, *Día sin Estudiantes* and el 21 de febrero, *Día de los Presidentes*

**Noche de Casa Abierta** es el martes, 1 de marzo

**Vacaciones de Primavera:** 1 de marzo al 1 de abril

### ¡El Primer Semestre Termina el viernes, 28 de enero, 2005!

Las calificaciones del semestre serán enviada a la casa la semana del 31 de enero

**El Semestre Segundo, el Primer Periodo de calificaciones termina el viernes 11 de marzo** Reporte de progreso será enviado a la casa la semana del 14 de marzo. (Pagado por la PTSA).

### ¿Sabe usted cómo hacer de Santa Mónica un mejor sitio para montar bicicletas?

Por favor traigan sus ideas y hágase parte de Motion by the Ocean

**Taller de Bicicleta/Bicycle Workshop**

sábado 5 de febrero, 10 a.m. - 12 p.m.

Ken Edwards Center

1427 Fourth Street (calle Cuatro)

Todos están bienvenido. Responda 31 de enero, 2005 al 310/458-2204 o [Transportation.Management@smgov.net](mailto:Transportation.Management@smgov.net)

¿Tiene interés en el futuro de bicicletas en Santa Monica? Llame a Elsa González Kapsinow.

¿Sabía Usted? • ¿California tiene unas de las normas académicas más alta del país? • ¿Solamente hay siete estados que gastan menos en la educación por estudiante que California? • ¿California tiene la segunda proporción más alta de estudiante por maestro en toda la nación?

## La PTA del Estado de California Explica

El 10 de enero la Coalición Educativa, que incluye la PTA del Estado de California, declaró sobre el presupuesto 2005-06 del estado propuesto por el Gobernador:

### Declaración de la Coalición Educativa sobre el presupuesto estatal 2005-06 propuesto por el Gobernador Schwarzenegger

La Coalición Educativa cree que desrazonable que el presupuesto propuesto por el Gobernador rompa la promesa que el hizo a los estudiantes y escuelas públicas de California.

El año pasado, los estudiantes y las escuelas públicas sacrificaron \$2 billones en cortes en curso porque el Gobernador prometió que las escuelas recibirían su parte justa de cualquier ingreso adicional del estado y que salvaría a las escuelas de cortes en el futuro. La propuesta del Gobernador rompe su promesa a los seis millones de estudiantes de California y está cortando aun más dinero para las escuelas.

El presupuesto propuesto por el Gobernador es un humo diseñado a distraer la atención del público de los verdaderos problemas que enfrentan las escuelas públicas. No hace nada para ayudar a las escuelas públicas y los estudiantes. Al contrario, agravan un problema de fondos inadecuados adicionándole más requerimientos sin comprometerse a dar fondos adecuados y estables.

Las escuelas de California han sufrido más de \$9.8 en cortes en

los últimos cuatro años. Esto ha querido decir el cierre de escuelas, aumento en el tamaño de clase, desempleos de maestros y personal de apoyo y una escasez enorme de bibliotecarias, consejeros y enfermeras. Muchas escuelas les hacen falta lo básico en materiales para la instrucción. Los votantes de California pasaron la Proposición 98 en el 1988 para proteger las escuelas y los estudiantes del mal causado por cortes en el presupuesto y para establecer un nivel mínimo para los fondos de la educación.

El plan del Gobernador llama para cortar otro \$2.3 billones de las escuelas y va en contra de los votantes de California, decepciona a los estudiantes y rompe el acuerdo sobre el presupuesto del Gobernador y la Legislatura del año pasado. Dos reportes independientes concluyeron que las escuelas de California no tenían suficiente fondos, tienen las clases más grande en e país y salarios inadecuados para los maestros. Al mismo tiempo, los estudios acreditan a California por tener las normas más altas y las evaluaciones con responsabilidad de las más altas del país. No podemos esperar que nuestros estudiantes lleguen a estos altos niveles sin los recursos necesarios para tener éxito. Nuestros estudiantes y nuestras escuelas se merecen lo mejor. .

Un resumen de las provisiones clave del presupuesto del Gobernador esta disponible al

[www.cbp.org./2005/050110govbudget.pdf](http://www.cbp.org./2005/050110govbudget.pdf)

El presupuesto propuesto está disponible al [www.govbud.dof.ca.gov/](http://www.govbud.dof.ca.gov/)

## El reporte de RAND demuestra que las escuelas de California quedan atrás en casi todas las medidas de los objetivos

Las escuelas públicas de California quedan atrás de la mayoría de las escuelas de la nación en casi todos los objetivos que miden los logros de los estudiantes, en fondos, calificaciones de los maestros y los edificios de las escuelas, según el nuevo estudio de la corporación RAND, es el análisis más completo sobre el sistema educativo. El estudio salió el 3 de enero crónica cómo el sistema del estado de K-12 ha caído de posición de líder 30 años atrás al fondo del barril en todas las categorías.

vea la grafica S1, página 10 al 19 al

[www.rand.org/pubs/monographs/2004/RAND\\_MG186.sum.pdf](http://www.rand.org/pubs/monographs/2004/RAND_MG186.sum.pdf)

Para más información sobre el estudio lea en resumen o el reporte entero en [www.rand.org/news/press.05/01.03.html](http://www.rand.org/news/press.05/01.03.html)

## Los resultados de las elecciones locales

Hay varias caras nuevas y líderes en las mesa recientemente elegidas::

**Junta Directiva de la Ciudad** - Bobby Shriver , Ken Genser, Richard Bloom, Bob Holbrook, Kevin McKeown, Herb Katz, and Pam O'Connor on the dais. Pam O'Connor es alcalde nueva y Herb Katz es alcalde temporal.

**Junta de SMC** – Susan Aminoff, Rob Arder, Margaret Quinones, Herb Roney, Dorothy Ehrhart-Morrison, Carole Currey, y Nancy Greenstein . La silla le pertenece a Carole Currey, Nancy Greenstein.

**Junta del Distrito** – Kathy Wisnicki, Jose Escarce, Maria Leon-Vazquez, Oscar de la Torre, Shane McCloud, Julia Brownley, y Emily Bloomfield en la Junta Educativa. Emily Bloomfield es Presidenta; Julia Brownley Vice Presidenta.

## La Donación Directa continúa

Estamos continuando nuestra campaña de Donación Directa por todo el año escolar. Actualmente, estamos un poco retrasados con las contribuciones necesarias para poder pagar por los proyectos de este año.

Gracias especiales a las siguientes familias adicionales por sus contribuciones que han contribuido a Samohi desde 1/7/05:

Abbott	Frankel Scheer	Love Corn	Sharf
Altman	Giolito	Lunsky	Sohoo
Altman Polon	Given Dennis	Malina Boehm	Stein Pratt
Anderson	Goetz	Miyade-Weaver	Suzuki
Banks	Gordon	Mollicone	Tamor
Beery	Graves	Mulvaney	Thomas
Beitcher	Himes Grawe	Nesbit	Verzemnieks
Blower Friemer	Itano	Newsom	Viault
Bolan	Jacobs	Nobles Kuyanov	Ward Hauty
Cahn	Johnson Wright	Ouzounian	Weber
Connor Rankin	Kannof	Goganian	Weinberg
Couturier	Kaiserman	Pomatti	Wexler
Daly Southam	Lew	Reyes	Whalen
Davanzo	Lindes	Robins	McQueeney
Dickinson	Long	Salvatori	Williams
Felton	Loopesko	Schaeffer	Young
Fletcher	Stricklin	Sepe-Wiesenfeld	Yuan

## Por favor continúe donando a la campaña, no es tarde!

Todas las donaciones, sin importar el tamaño son importantes y harán una diferencia.

Escriba el cheque por cualquier cantidad a Samohi PTSA y envíelo a 601 Pico Blvd, Santa Mónica, CA 90405.

## ¡Asistencia de Tarea Gratis en Samohi!

- Muchos maestros proveen ayuda adicional después de clase y durante el almuerzo. Pídale a su hijo que le pregunte a su maestro ofrece ayuda extra.
- Estudiantes universitarios vienen a ayudar a la escuela los martes y jueves después de clase hasta las 5:00 p.m. en el salón T207 y T208. Asistencia en matemáticas, inglés, biología, y otras materias- Gratis.
- El voluntario Warren Orloff, ofrece asistencia en matemáticas todos los días después de clase hasta la 4:30 en el salón H100.
- Siempre hay una bibliotecaria disponible para asistir a los estudiantes en la biblioteca (abierta de 7am-5pm lunes a jueves y de 7am-4:30pm los viernes.)
- Los estudiantes del programa tienen acceso a asistencia durante el día escolar. Para más información, por favor contacte al consejero de su hijo.
- El segundo semestre, estamos adicionando una asistencia en matemáticas para los estudiantes que lo necesitan en álgebra y geometría según los resultados de la calificaciones.
- Estamos organizando asistencia para los que no han pasado el examen CAHSEE (*Examen de Salida de la Preparatoria en California*). Será después de escuela y se le invitará a su estudiante a participar. Para preguntas sobre esta asistencia por favor contacte Wendy Wax Gellis, Advisor/Administrator, 395-3204 ext 472 o correo electrónico gellis@smmusd.org.

## Apoyo y Consejería

La consejería está disponible en la escuela para estudiantes que tengan problemas que estén interfiriendo con su habilidad de tener éxito en la escuela. Hable con el consejero en la Casa de su hijo. Para más información contacte:

**Kathy McTaggart**, Alliance Program Director, 395-3204, ext. 322, mctaggart@smmusd.org,

**Tiffany Tyler**, Especialista en Participación de Estudiantes, 395-3204, ext. 330

**Roberto Morales**, Enlace en Participación de Estudiantes, 395-3204, ext. 331, roberto.morales@smmusd.org

## Escuela de Verano en Samohi

La escuela de verano del 2005 comenzará el martes 4 de julio y termina el viernes, 12 de agosto. No habrá clases para "avanzar" en la escuela de verano. Inscripción comienza después de las vacaciones de primavera en abril. El espacio es limitado.

Habrà información en la Página de la escuela ([www.samohi.smmusd.org](http://www.samohi.smmusd.org)) indicando cuando estarán las solicitudes disponibles con el consejero. Los estudiantes necesitan permiso administrativo antes de tomar clases de verano en otra escuela si desean tener crédito en record. Para más información contacte: Mrs. Esseln, 395-3204, ext 139.

## La Biblioteca de Samohi- Solicitud y Eventos

Necesitamos voluntarios para organizar los libros. También necesitamos libros electrónicos en cinta.

**Semana de Poemas:** Gracias a una beca de la Fundación Educativa de Santa Mónica -Malibú, las bibliotecarias del distrito patrocinarán una Semana de Poemas en abril. Necesitamos su ayuda.

**The Kite Runner:** Estamos leyendo este libro en toda la ciudad. Les urgimos que lea.

**Estudiantes Técnicos de la biblioteca Fantásticos:** La biblioteca de Samohi desea darle reconocimiento a los siguientes estudiantes por su excelente trabajo como técnicos: Dennis Kuntorovskiy, Nicki Movassaghi, Alberto Garcia, Nithyana Javaraiah, y Dieter Alvarado.

-Ann McKechnie, Library Media Teacher, 395-3204, ext. 437, mckechnie@smmusd.org

-Dana Bartbell, ext 262 bartbell@smmusd.org, Samohi Librarians

*The Viking Voice, January '05*

## ¡Nuevas Pólizas! Dejar/ añadir/ transferir clases

Los estudiantes que deseen cambiar clases deberán reunirse con sus consejeros académicos. Por las primeras tres semanas del semestre los estudiantes deberán dejar clases que no son requeridas para graduarse, proporcionando otras clases que el alumno deberá tomar. No habrá un incremento en la posición de el servicio de asistencia de maestro, pero habrá algunas disponibles para seleccionar. Los estudiantes deberán reunirse y discutir el efecto de algún cambio al horario con su consejero.

Los estudiantes en grados 11 y 12 deberán reducir la duración de su día escolar, si ellos están reuniendo todos los créditos requeridos para su graduación, sin embargo, los estudiantes en el grado 11 deberán mantener un mínimo de cinco clases y los estudiantes en el grado 12 deberán mantener un mínimo de 4 periodos de clases. Los estudiantes deberán estar haciendo progresos satisfactorios hacia los requerimientos de la graduación. los estudiantes en grados 9 y 10 deberán mantener 6 periodos escolares diarios. El consejero deberá evaluar cada caso individualmente.

No se repetirán cursos esta primavera por muchas razones.

La primavera pasada se repitieron cursos por clases no pasadas en el primer semestre, no hubo muestras de logros ya que las primavera es fugaz. Además, los estudiantes quienes no están repitiendo, con frecuencia tenían su horario completo cambiado debido a estar cerrando y abriendo nuevas clases. Esta práctica trastornó la relación positiva entre estudiantes en el salón de clases, como también trastorno los buenos progresos académicos.

Este año nuestra prioridad por los estudiantes es la estabilidad en los contenidos del área del maestro, para garantizar fuertes progresos académicos. Algún cambio de clases aprobado por el consejero incluirá el mismo maestro. Solicitar cambio de maestro por el mismo curso no son aceptados. Los estudiantes tienen que firmar por un año de cursos y este es nuestro intento para proteger la integridad de los horarios de los estudiantes, así esa instrucción continuará sobre una base consistente a preparar a nuestros estudiantes bien para el examen de mayo de California High School Exit Exam, y por un decidido progreso académico.

Todos los cambios de estas clases que son aprobadas serán completadas en la semana tres del 2do. semestre. Las solicitudes a través del primer periodo que son recibidas una semana después del primer reporte de progreso son enviadas por correo a casa y serán consideradas. Estas solicitudes deberán ser presentadas al director de Casa y serán revisadas por un comité administrativo. Las clases no cambiadas serán consideradas o hechas después de la octava semana de clases.

## ECHAS PARA DEJAR CLASES Segundo semestre 2005

Todos los pedidos van al consejero o Director de Casa

18 febrero, 2005 con el consejero para repaso

25 febrero, 2005 con la administración para repaso

## Todos los Estudiantes del 10º grado

### Examen de Salida de la Preparatoria en California (CAHSEE)

Todos los estudiantes del 10mo. grado deberán tomar el examen de California High School Exit Examination (CAHSEE) el martes 15 de marzo; Ingles/ Language Arts, y miércoles 16 de marzo; matemáticas. No entrarán tarde el miércoles.

El CAHSEE, es un examen que todos los estudiantes de escuelas públicas alrededor del estado, deberán pasar para llegar a graduarse de la preparatoria (High School), como estipula la ley del estado. El propósito del CAHSEE, es ayudar a aumentar los logros del estudiante en la preparatoria y garantizar que los estudiantes quienes se gradúan de la preparatoria High School puedan demostrar habilidad en la tabla de materias reglamentadas en el estado; leer, escribir y matemáticas. Recuerda a los del 10mo. grado lo importante de estar bien descansado y a tiempo en los dos días, así ellos podrán hacer lo mejor en este examen. Recuerde marcar tus calendarios! No comenzará tarde el miércoles, 16 de marzo debido a el examen de matemáticas de CAHSEE.

-Tristan Komlos, Coordinador de exámenes, 395-3204 ext 336 o tristan.komlos@smmusd.org

*Samohi 395-3204*

## Reunión de Padres

### **SOL/ELAC\* Grupo de Padres Latinos**

*\*Espiritud de Amor/Comité Consejero para los Estudiantes que Están Aprendiendo Inglés*

El Grupo de Padres Latinos se reúne mensualmente, los lunes a las 7:00 p.m. en la Cafetería de Samohi. La próxima reunión del SOL/ELAC será el lunes, 28 de febrero, 28 de febrero, 14 de marzo, 25 de abril, 23 de mayo.

Las reuniones son en Español. Todos están invitados y bienvenidos.

Para más información, por favor llame a

**Tere Viramontes-Gutierrez**, Intermediaria de la Comunidad, 395-3204, ext. 375.

## **Segundo Semestre: Reporte de Progreso y Tarjeta de Informe**

**La sexta semana finaliza en marzo 11:** El Reporte del Progreso será enviado por correo a casa en la segunda semana de marzo (14 de marzo).

**La doceava semana finaliza en mayo 6:** El Reporte de Progreso será enviado a casa en la semana del 9 de mayo.

**El segundo semestre finaliza el 24 de junio:** La Tarjeta de Informe será enviada por correo a casa la semana del 27 de junio.

## **Comprométete con la Noche de Graduación 2005!**

Por favor trate de venir con nosotros a la reunión general, martes, febrero 1o. en la cafetería estudiantil. Enviaremos por correo la forma de ofrecerse voluntarios a todos los padres, necesitamos gente para ayudar! además de llenar sobres, esto es una excelente oportunidad de conocer a los miembros del comité y descubrir como puede participar en este evento.

Si eres un padre de graduado, busca la forma de voluntariado que recibirás en tu casa la primer semana de febrero. Los espacios para voluntarios serán otorgados a las primeras solicitudes que así lo soliciten, retorne la hoja rápidamente para reservar su hoja de turno. Si lleva a su hijo a comer después de la graduación, preferimos que no tome el primer turno. Si no puede trabajar en el evento de la noche, hay otras formas de estar envueltos.

**Contacta a Kim Eyler**, la coordinador para más detalles: eyler6@aol.com; 391-0782. En los últimos días de febrero, formas para voluntarios estarán disponibles a padres de no graduados en la PTSA, SOL-BAC, AAPSSSG. En la oficina de actividades (y en la pagina de la Red Mundial .)

### **¿Ha comprado su estudiante los boletos para Grad Nite?**

Para una lista completa de los estudiantes que han comprado sus boletos visite la Página Samohi: [www.samohi.smmusd.org/Grad\\_Nite](http://www.samohi.smmusd.org/Grad_Nite) Para información de pago aplazo o becas, **contacte a Chris Thornton**, chthornton@earthlink.net, 450-2978. Siempre se necesitan donaciones de dinero, premios, y materiales de construcción. Para más detalles, **contacte Val Glick**, fivevluck@aol.com, 392-5970.

## **Comité de la Comida para la Noche de Graduación**

El Comité de la Comida para la Noche de Graduación encargado de darle de comer a todos los graduados necesita su ayuda. Estamos buscando donaciones. Si usted o alguien que usted conoce puede ayudar contacte:

**-Janine Brownstone**, Food Chair, Grad Night Committee, 393-9174,

## **Recordatorio Fin de Semestre de parte de la Biblioteca**

Ya que viene el fin del semestre, por favor recuérdale a su estudiante que regresen los libros que han tomado prestado y que resuelvan cualquier obligación que tengan con los textos. Si las deudas no son resueltas no podrán obtener su horario de segundo semestre.

## **AAPSSSG (Grupo de apoyo de Padres y Personal Afro-americano)**

**Para honrar el mes de la Historia del Negro** el 25 de febrero, 2005 a las 7:00pm en el Centro de Humanidades (Humanities Center), el grupo de AAPSSSG (Grupo de apoyo de Padres y Personal Afro-americano) en asociación con, The Theatre Perception Consortium "North On South Central Avenue", un musical que va a recrear cómo era el entretenimiento negro en Los Angeles durante los 30s y 40s cuando venían de todas partes del mundo a ver actuaciones legendarias de Billie Holiday, Ella Fitzgerald, Nat King Cole, Dorothy Dandridge, y muchos más en la Avenida Central. La actuación ha recibido muchos reconocimientos y premios. Es una actuación que no se debe perder. Los precios de los boletos son \$20 para adultos y \$10 para estudiantes. Empiezan en venta el 1 de febrero. **Las próximas reuniones del grupo AAPSSSG serán en el tercer martes del mes a las 7 pm: 15 de febrero, 15 de marzo, 19 de abril, y 17 de marzo.** Para más información contacte a **Pam Allen Jones**, Relaciones de la comunidad, 395-3204, ext. 482, allen@smmusd.org

**Barry Snell**, 310/621-9961, bsnell-cpa@earthlink.net

**Robbie Jones**, 399-8575, AAPSSSG presidentes

## **La Bebida y Abuso de Sustancia en los Adolescentes**

La reunión de la PTSA el pasado 11 de enero enfocó en el abuso de sustancia y la bebida en los adolescentes. Cada panelista indicó la importancia de mantener una comunicación abierta con sus hijos. Los panelistas incluyeron:

**Kathy McTaggart**, Enlace de la Comunidad de Samohi y SMMUSD, 395-3204, ext. 322. Provee intervención para los estudiantes de Samohi y el distrito.

**Susie Spain**, *Angels at Risk*, 471-8969 or 323/ 841-9631

Parte del programa de consejería para los adolescentes y sus familias en Samohi los martes en la noche a las 6 pm.

**Suzie Kim**, SMPD Oficial de Relaciones con la Comunidad, 434-2627

**Ze'ev Korn** y **Marisa Graiwer**, Servicios Judío para Familias,

393-0732 Un programa de consejería aquí en la escuela.

**Sgt. Trisler**, SMPD, *Traffic Education and Enforcement*, 458-8950

Education for teens about driving under the influence of alcohol or drugs.

**Sgt. David Rynski**, SMPD, *School Resource Officer*

**John Lieberman**, *Visions*, 592-7623 or 818/ 889-3489 A local in- and out-patient facility for teens and families.

**Anthony Smith**, *New Start*, 586-0058, ext 201, Servicio de consejería para los adolescentes y sus familias sobre dependencia química.

**Muchas gracias a los panelista por su contribución a nuestra comunidad. Muchos de los servicios son gratis.**

## **La Biblioteca de la Samohi esta abierta con ayuda y recursos**

*(Lunes-jueves de 7am - 5 pm y viernes hasta las 4:30pm)*

**Recuerda, ahí esta siempre un maestro certificado para asistir a los estudiantes.** La impresora y materiales electrónico relacionados al plan de estudios, así los estudiantes pueden casi siempre encontrar lo que ellos necesitan.

**Nuevo! eBooks/ libros de consulta en la biblioteca!** Nuestro primer eBooks en la biblioteca de la SAMOHI, son libros de consulta de Editoriales Gale. Desde la pagina de internet de la biblioteca; [www.samohi.smmusd.org/library/](http://www.samohi.smmusd.org/library/), ve hacia abajo y teclea en Galenet, entra la clave: Sant86396. Selecciona Gale Virtual Reference Library. Podras encontrar los volúmenes completos de: *Diccionario Biografico del Mundo*, *Enciclopedia de la Gran Depresión*, *Enciclopedia de la Economía Nacional*, *Enciclopedia de las Naciones* y *la Enciclopedia de Ciencias*.

**-Ann McKechnie**, Library Media Teacher, 395-3204, ext. 437, mckechnie@smmusd.org

**-Dana Bartbell**, ext 262 bartbell@smmusd.org, Samohi Librarians

## ¡Nuevo! Clases de SMC en Samohi este semestre

Como parte de nuestro programa de "inscripción doble" con SMC, las siguientes clases de SMC serán ofrecidas en este campo después de clase.

**Baile 31: Ballet 1**, lunes & miércoles 3:30-5

**Arte 10A: Diseño 1**, lunes & miércoles 3:30-5:55

**Negocio 1: Introducción a los Negocios**, lunes & miércoles 3:30-4:50

Para participar en este programa, los estudiantes tienen que completar una solicitud para Santa Monica College y una forma de consentimiento para doble inscripción.

Para más información contacte al consejero de su niño o Mrs. Audet, Coordinadora del programa de Doble Inscripción, en H106, 395-3204, ext. 187, audet@smmusd.org

## ¡Llamando a Todos los Estudiantes!

### ¿Esta interesado en tomar clase AP de Arte?

La clase de AP en Arte es un programa federal riguroso que le ofrece una oportunidad a estudiantes de la preparatoria de ganar créditos de la universidad. Por favor consulte la Página del Collegeboard Website para información incluyendo ejemplos de arte.

El proceso comienza para el arte AP durante la última semana de febrero. Para más información contacte: Ms. Bouse, 395-3204, ext 443, bouse@smmusd.org

## Fechas de Exámenes para Entrar a la Universidad & Fechas de Inscripción

Inscripción en línea (pago con tarjeta de crédito) para:

Exámenes de SAT I & II: [www.collegeboard.com](http://www.collegeboard.com)

Exámenes de ACT: [www.act.org](http://www.act.org)

El Centro Futuro(Future Center) tiene materiales de práctica y solicitudes en papel y pueden ayudarle a decidir qué examen tomar.

Upcoming Tests	Test Date	Registration date ends	Late Registration with late fee by
ACT	Feb. 2, 2005	<del>Jan. 7, 2005</del>	Jan. 21, 2005
New SAT I only	Mar. 12, 2005	Feb 7, 2005	Feb. 16, 2005
ACT	Apr. 9, 2005	Mar. 4, 2005	Mar. 18, 2005
New SAT I & II	May 7, 2005	Mar. 25, 2005	Apr. 6, 2005
New SAT I & II	June 4, 2005	April 29, 2005	May 11, 2005

## Acceso de los Grados vía Computadoras en Línea: Pinnacle

Los padres y estudiantes pueden chequear los grados y el progreso de los estudiantes vía la red mundial usando el programa

[www.samogb.smmusd.org/scripts/piv.exe](http://www.samogb.smmusd.org/scripts/piv.exe)

Todo lo que necesita es el número de identificación y el número clave de Pinnacle. Ambos números se pueden encontrar en la tarjeta del reporte de progreso de 6 semanas o puede llamar al consejero de su hijo/a. *Por favor note que la clave es la misma que el año pasado para esos estudiantes del 10-12 grado.*

**¿Cómo se usa?** Comuníquese con el consejero de su estudiante con fin de recibir un número clave (pin code) y siga las direcciones abajo:

- 1) Vaya primero a la hoja central de la escuela: [www.samohi.smmusd.org](http://www.samohi.smmusd.org)
- 2) Haga clic en parte donde dice **Parent Info**, entonces **Student Grades**
- 3) Haga clic en parte donde dice <<Click Here to Begin>>
- 4) Méta el número **Student ID** de su estudiante y el número clave **pin code**
- 5) Haga clic donde dice **Request Report**
- 6) Elija una clase (**Class Selection**)
- 7) Elija un reporte (**Report Selection**)
- 8) Elija el tiempo indicado

¡Estudiantes Seniors! Por favor reporten su aceptación al Centro Futuro(Future Center)! ¡Queremos compartir!

## Fechas Importante para Estudiantes en el Último Año

**Fechas de cumplimiento de solicitud para FAFSA:** 1 de enero – 2 de marzo, 2005

**Taller de Asistencia Financiera para FAFSA:** 10 de enero & 22 de febrero, 2005

**Fecha de cumplimiento para California Grant:** 15 de enero, 2005

**Fecha de cumplimiento para Becas de Samohi:** 1 de marzo, 2005

**Beca para Senior y Honors Evening:** 7 de junio, 2005

## Solicitud Gratis para Federal Student Aid Talleres para Información y Solicitud

*martes, 22 de febrero, 2005, 7 pm, Biblioteca de Samohi*

- Aprenda sobre la forma FAFSA
- Aprenda sobre el proceso
- Aprenda cómo completar ambas

## ¡Seniors completen la FAFSA ahora!

El 2 de marzo – es la fecha que se vence la forma AFSA. ¿Porqué es importante? Porque hay mucho dinero – hasta \$9700 al año para la universidad. Entregue la forma de FAFSA y asegúrese que tiene el número del seguro social.

Algunos datos de FAFSA:

1. La solicitud gratis de la Ayuda Federal para Estudiantes es uno de los documentos más importantes que pueden llenar para obtener becas.
2. Tenemos dos talleres para contestar preguntas. Ayuda por teléfono también está disponible departe del Centro de Información Federal para Estudiantes llamando al - 800-433-3243.
3. La fecha para llenar con prioridad es el 1 de enero al 2 de marzo.
4. Este seguro que visite el sitio oficial al: [www.fafsa.ed.gov](http://www.fafsa.ed.gov)

## Reportes del Medio Año

Muchas escuelas piden el Reporte de Medio Año en enero 15. Pare ese tiempo nuestro semestre no ha terminado. Así es que no tenga pánico. Enviaremos el reporte, siempre y cuando siga las instrucciones abajo, tan pronto se finalicen las calificaciones.

1. Sumita su Reporte de Medio Año al Centro Futuro(Future Center) para el 15 de enero.
2. Provee un sobre tamaño de negocio con dos (2) estampillas de primera clase con la dirección de la escuela que está pidiendo el Reporte de Medio Año.
4. Necesitamos una copia oficial de su record por cada pedido del Reporte de Medio Año. Ordene la copia de su record con Estela Flores.

## Libreto de Becas

No será considerado por ninguna beca local amenos que complete la solicitud al final del Libreto de Becas y regresarlo con siete (7) copias y marcando la lista para que sobresalgan con las becas que reúne los requisitos. La fecha se cumple el 1 de marzo, 2005. No aceptan aplicaciones tarde.

## Premios

Vamos a pedir que reporte todos los premios y becas que les sean ofrecidas. Por favor mantenga un record de sus premios.

## Si planea asistir a Santa Monica College (SMC)

El examen de Colocación de SMC lo darán el 31 de enero, es un día sin clase debido al fin de semestre. Si desea tomar ventaja de esta oportunidad de tomar el examen temprano, venga y apúntese en el Centro Futuro (Future Center).

## Becas CAL

Su GPA será enviado electrónicamente al Centro Futuro (Future Center) para determinar si tiene los requisitos para la Beca de Cal. Necesitamos su número de seguro social. Tiene que someter un FAFSA.

### Se necesitan nominaciones para el premio de Servicio Sobresaliente a la comunidad

La PTSA de Samohi PTSA otra vez está pidiendo nominaciones para el Premio Honorario de Servicio. Por favor, déjenos saber si conoce a alguien quien a hecho más de lo que se espera de ellos envíele vía correo electrónico a Janine Brownstone al JanAndBobo@adelphia.net. O puede dejarle una nota en la caja de la PTSA localizada en la oficina principal de la escuela. Por favor incluya su nombre y una breve descripción de lo que este individuo o grupo ha contribuido a la escuela. Se cumple e 1 de marzo, 2005. ¡Gracias por su ayuda!  
-Janine Brownstone, 393-9174, JanAndBobo@adelphia.net

### ¡Felicitamos a Samohi!

¿Conoce a un estudiante, maestro, padre o grupo que haya recibido reconocimiento fuera de la escuela? El boletín Viking Voice quiere reconocerlos. Por favor envíe una pequeña descripción. Gracias a los que nos enviaron la siguiente noticia.

- La maestra de inglés en Samohi, Merdith Louria fue una de 36 ganadores del premio United States-Eurasia Awards por Excelencia en la Maestría.
- La maestra y entrenadora de Samohi, Tania Fischer recibió el premio National Champion. USA Track and Field Club Championships en Cross-country.
- Miembros de la orquesta de Santa Monica High School recibieron honores del estado y la nación.
- Felicitamos a Allen Goolsby por ser seleccionado como miembro de la National Society of High School Scholars.
- La película del estudiante, Justin Dean fue ganadora en el festival AFI Film Fest.

### Y aquí en el campo escolar...

- Los siguientes maestros de Samohi han completado con éxito el riguroso proceso de certificación National Board en 2003-2004: Amy Bisson, Adrienne Karyadi, LaSonya Roberts, and Rob Thais.
- La campaña de recaudación de juguetes del grupo MEChA fue todo un éxito. ¡Coleccionaron 168 juguetes para las escuelas Juan Cabrillo, Franklin, Grant, McKinley, Edison, Will Rogers, and Roosevelt!!

### Por favor envíenos su buena noticias:

Maria Rodriguez, Viking Voice co-editor, Elena51@aol.com

### ¿Sabe su adolescente la ley?

El siguiente mensaje viene del SMPD Relaciones de la Comunidad del Oficial Suzie Kim.

La calle tres (Third Street Promenade) es muy popular para los turistas y los residentes de todas las edades. Recientemente el departamento de Policía de Santa Mónica ha notado un aumento negativo en las actividades de la juventud en esta área. Es importante como padres que tengamos conocimiento y que compartan con sus hijos los siguientes Códigos Penal y Municipal. Códigos de Santa Mónica Municipal:

**Toque de queda 4.08.370(b)** Toque de queda para las edades de 18 años o menos 10pm – 6am domingo a jueves de 11p – 6a viernes y sábados.

**Promanada 3.12.590** Regulación sobre los patines, patinetas, y otras cosas similares con ruedas en las calles públicas y otras áreas públicas y bicicletas en la calle de Tres (Third Street Promenade).

3.12.350(a) Durante las horas de 6a a 1a, ninguna persona puede sentarse o acostarse en las aceras públicas en el Distrito Bayside o en la Calle Tres (Third Street Promenade)

### Códigos de Salud y Seguridad

11357b Posesión de menos de 28.5 gramos de marihuana  
11532a Estar de vago como mirador o vendiendo narcóticos, etc

### Campaña de Donación de juegos de video CD/DVD Para beneficiar la Marching Band

1. Done su CD, DVDs y Juegos de Video de su colección o sus amigos.
  2. Los vendemos en eBay y Amazon.
  3. Lo fondos van a la operación de la banda de Samohi.
- Para más información contacte: Amy Van Pelt, correo electrónico ABVP@aol.com

### La Obra Musical The Music man en Barnum Hall del 3-12 de marzo

Preestreno de The Music Man el 3 de marzo a las 7pm (boletos especiales \$15); estreno el viernes, 4 de marzo a las 8pm; y continúa el sábado, 5 de marzo y el 12 a las 2 y 8pm. Los boletos son \$20. Flex-Pases y suscripción de descontada son \$40 y \$30. Para boletos valla al Centro de Humanidades a la oficina de boletos por teléfono al 310-458-5939, o at [www.smclo.org](http://www.smclo.org).

### Samohi vende artículos Atleta durante los juegos

Los artículos atléticos de Samohi se están vendiendo rápido. Las sudaderas, gorras, y visores se venden en la mayoría de los juegos para apoyar a nuestros equipos. Para más información contacte: Doug Kim, Samohi Athletic Director, 395-3204, ext 495, dkim@smmusd.org o Jeannie McGrew, 925-2637, cajb1234@aol.com

### Agradecimientos por el Ebellecimiento

Los padres y voluntarios de la PTSA Randi Hutchinson han pasado innumerables horas organizando el Día de Embellecimiento para los estudiantes y voluntarios. Su duro trabajo en el área del jardín alrededor del departamento de arte y en toda la escuela. [www.samohi.smmusd.org/art/index.htm](http://www.samohi.smmusd.org/art/index.htm)

Si usted usa la tarjeta de Preferencia de Albertsons/Savon Preferred Savings, por favor esté seguro que visite en la Red Mundial la Página de Albertsons y anótese para que automáticamente donen a la escuela cuando usted compre. Visite [www.Albertsons.com](http://www.Albertsons.com). Solamente toma unos minutos.

### Códigos Penal

- 71 P.C. Amenazar a un oficial público o oficial de la escuela
- 182.5 P.C. Participar en pandillas criminal
- 303a P.C. Estar de vago pidiendo o solicitando bebidas alcohólicas
- 308b P.C. Posesión de tabaco y parafernalia relacionadas
- 490.1 P.C. Robo por menos de \$50.00
- 374.4(a)P.C. Tirar basura

### Código de Vehículo

21212.(a) Se requiere casco protectorio: A personas menor de 18 años de edad no debe de operar una bicicleta, una patineta sin motor, o patineta o patines en línea o regulares, sin un casco protectorio.

### Códigos de negocios y profesión

- 25658 B&P Menores consumiendo alcohol
- 25658.5 B&P Menores atentando de comprar alcohol
- 25661 B&P Posesión por un menor de tarjeta de identificación (ID) falsa
- 25662 B&P Posesión de alcohol

Para información adicional visite a la Red Mundial del Departamento de Policía de Santa Monica al [www.santamonicapd.org](http://www.santamonicapd.org) o llame al teléfono para no emergencia del Departamento de Policía de Santa Mónica 310-458-8491 Emergencia 9-1-1

- Suzie Kim, Crime Prevention/Community Relations, SMPD  
333 Olympic Drive, Santa Monica, CA 90401, 310-434-2627

See back for calendar and parent meeting information

*En Español pages 8-11*

Does your teen know the law?

Teenage Drinking and Substance Abuse support,

Summer School dates, Grad Nite, College info for seniors and juniors,

New Adding/Dropping classes dates, Tutoring at Samohi,

A message from Dr. Straus, SMMUSD budget freeze,

Look inside this issue for:

January 2005

# WIKING VOICE

Parent Teacher Student Association



		January
28	Periods 6 & A Finals (early dismissal at 1:05pm)	
	First Semester Ends	
31	<b>Pupil Free Day</b> - No School	
	SMC Placement Test (see p. 5 for more info)	
		February
1	Second Semester Begins	
	<b>Grad Nite General Meeting</b> , 7pm, cafeteria	
4	Report Cards mailed home	
8	<b>PTSA Meeting</b> , focus on Houses, 7pm, cafeteria	
15	<b>Site Governance Meeting</b> , 5pm, Rm L203	
	<b>AAPSSSG Meeting</b> , 7 pm, cafeteria	
16	New SAT I - Late Registration Deadline for 3/12/05 test	
18	Last Day to drop or change classes with advisor review	
21	<b>Presidents' Day</b> - No School	
22	FAFSA Workshop (Free Application Form Federal Student Aid), 7 pm, library	
25	Last day to drop classes with administrative review	
	<b>AAPSSSG Black History Month theatre event</b> , 7 pm, see info at right	
28	<b>SOL/ELAC Meeting</b> , 7pm, cafeteria	
		March
1	<b>Open House</b> , 7 pm, early dismissal	
	Samohi Scholarships applications due	
2	FAFSA form due (postmarked by this date)	
	Senior Panoramic Picture taken	
3 & 4	"The Music Man" 7 pm, Barnum Hall	
5	"The Music Man" 2 & 8 pm, Barnum Hall	
8	<b>PTSA Meeting</b> , 7pm, cafeteria	
9	Early Dismissal - No late start	
11	End of First 6 week grading period of 2nd Semester	
12	"The Music Man" 2 & 8 pm, Barnum Hall	
	SAT I test given at various locations	
14	<b>SOL/ELAC Meeting</b> , 7pm, cafeteria	
	Progress Reports mailed home	
15	CAHSEE testing/English	
	<b>Site Governance Meeting</b> , 5pm, Rm L203	
	<b>AAPSSSG Meeting</b> , 7 pm, cafeteria	
16	Regular schedule - No late start	
	CAHSEE testing/Mathematics	
17	<b>Coffee with the Principal/Staff</b> , 8:30am, cafeteria	
18	ACT registration deadline for Feb. 7 test date	
21- Apr 1	<b>Spring Break</b> - No School	

Please check Samohi website at [www.samohi.smmusd.org](http://www.samohi.smmusd.org) for updated information!

## Parent Meetings

### AAPSSSG

*African American Parent Student Staff Support Group*

**In honor of Black History month** on February 25, 2005 at 7:00pm in the Humanities Center, the African American Parent Student Staff Support Group (AAPSSSG) will host, in conjunction with *The Theatre Perception Consortium*, "North On South Central Avenue." This unique musical re-creates what black entertainment was like in Los Angeles during the 30's and 40's when people from all over the world flocked to establishments on Central Avenue to hear legendary artists such as Billie Holiday, Ella Fitzgerald, Nat King Cole, Dorothy Dandridge and many others. The show has received many recognitions and awards and it is a performance that you will not want to miss. Ticket prices for this event are \$20 for adults and \$10 for students and will go on sale beginning February 1, 2005.

**Upcoming AAPSSSG meeting dates are the third Tuesday of the month at 7 pm: February 15, March 15, April 19, and May 17.**

For more information, please contact **Pam Allen Jones**, Community Liaison, 395-3204, ext. 482, [allen@smmusd.org](mailto:allen@smmusd.org)  
**Barry Snell**, 310/621-9961, [bsnell-cpa@earthlink.net](mailto:bsnell-cpa@earthlink.net)  
**Robbie Jones**, 399-8575, AAPSSSG Co-presidents

### SOL/ELAC Latino Parent Group

*Spirit Of Love/English Learners Advisory Committee*

Latino parent group meets monthly, on Mondays at 7:00 p.m. in the Samohi Cafeteria. **The next SOL/ELAC meetings are Mondays**, February 28, March 14, April 25, May 23. Meetings are conducted in Spanish. All are invited and welcome. For further information, please call **Tere Viramontes-Gutierrez**, Community Liaison, 395-3204, ext. 375.

### PTSA Parent Teacher Student Association

**All are invited to the February 8th meeting at 7 pm in the cafeteria.** Please see page 1 for more PTSA information.